

In order to install this product, modification of the core support is needed as the core of this product is much larger than that of the original. Please follow the steps below.

First, please make sure you have all the included parts

- Sponge -1pc (H30×W30×1m) → This is used for ⑥
- T-shaped stay -1pc → This is used for ④
- M8×L25 bolt/screw (with washer) -6pcs → All are used for ③
- M8×L15 bolt/screw -2pcs → All are used for ④



【DRLIA020061】 Images of installation  
The area within the yellow frame needs to be modified



【The core support after cut-out modification is completed】

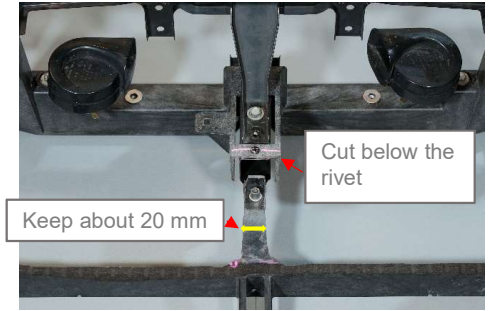
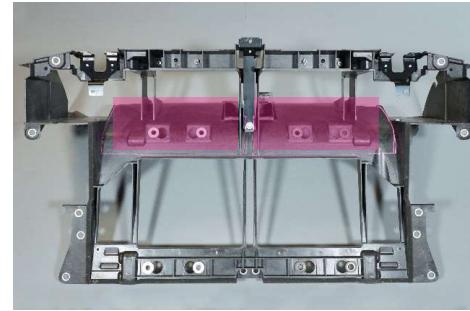
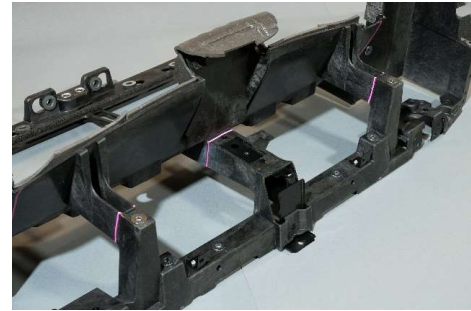


① Cut along the pink lines

↓ Close-up image of the parts with the pink lines

② Cut out the colored parts

The center column should retain a width of 20mm



③ Fix the bottom three parts in the original mount position (There is one more point in the middle, on the other side not shown in this image)

④ Fix the top part with the included T-shaped stay

⑤ Modify the bumper reinforcement if necessary

⑥ Fill the gap between the shroud and the product to prevent the vehicle's airflow from escaping

